



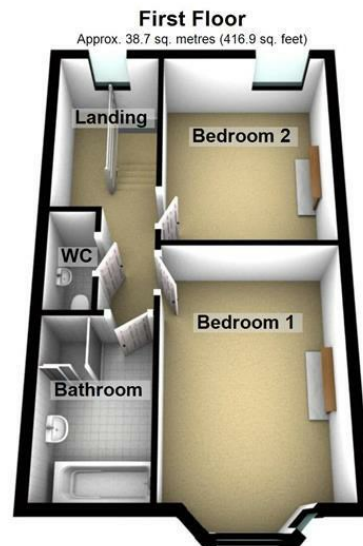
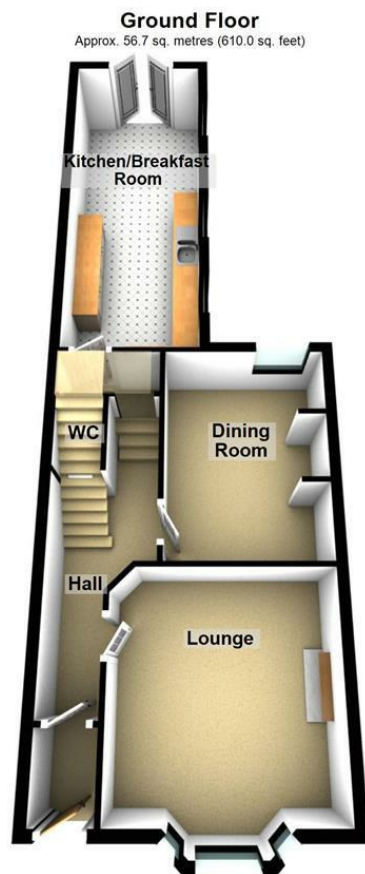
2 Bed  
House - End  
Terrace  
located in Alnwick

£995 PCM



**HOTSPUR**  
RESIDENTIAL





Total area: approx. 95.4 sq. metres (1026.9 sq. feet)

Floor plan is approximate and is provided for visual reference only.  
Plan produced using PlanUp.

**Ashburn House, Scott Street**

Energy Efficiency Rating		
	Current	Potential
Very energy efficient - lower running costs		
(92 plus) <b>A</b>		
(81-91) <b>B</b>		84
(69-80) <b>C</b>		
(55-68) <b>D</b>	60	
(39-54) <b>E</b>		
(21-38) <b>F</b>		
(1-20) <b>G</b>		
Not energy efficient - higher running costs		
EU Directive 2002/91/EC		
England & Wales		

## DIRECTIONS

## CONTACT

Hotspur Residential Market Place  
Alnwick  
Northumberland  
NE66 1HS

E: [info@hotspurresidential.co.uk](mailto:info@hotspurresidential.co.uk)  
T: 01665 602626  
[www.hotspurresidential.co.uk](http://www.hotspurresidential.co.uk)



**HOTSPUR**  
RESIDENTIAL